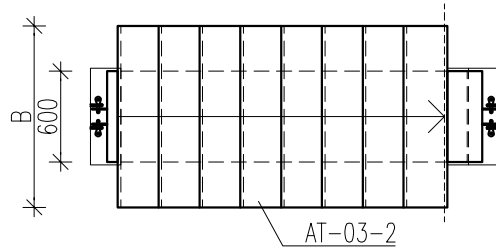
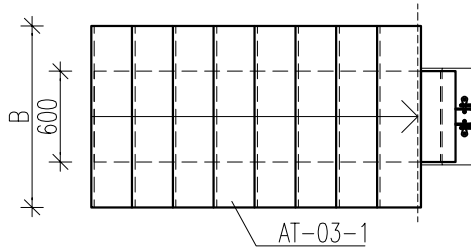
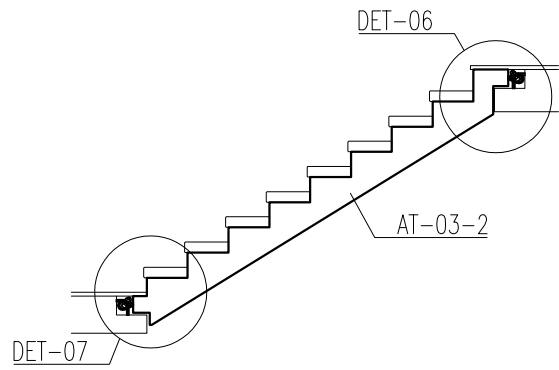
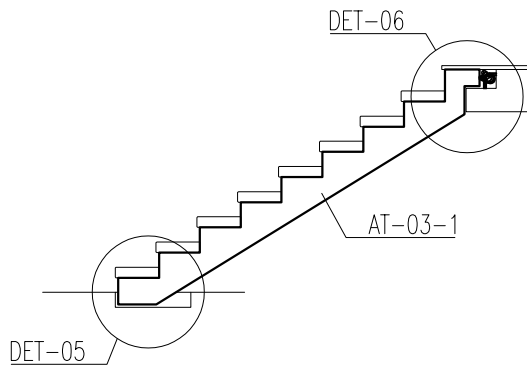


# AT-03



## ELEMENT DIMENSIONS (mm)

B	900...1200
---	------------

## NOTES:

1. LIVE LOAD FOR STAIR ELEMENT:  $q_k = 4.0 \text{ kN/m}^2$ .
2. TOP SURFACE - TERRAZZO.
3. BOTTOM SURFACE - SMOOTHED/ROLLERED, READY FOR PAINTING.